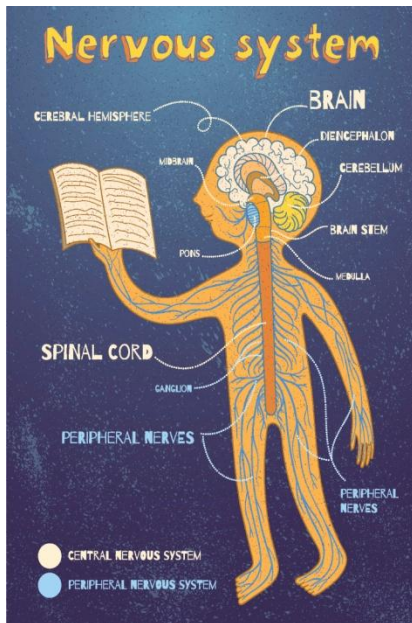


Help! What Toys are Safe for our Children?



Lead is a toxic chemical that may be found in your children's toys. The Consumer Product Safety Commission (CPSC) does not test all toys. It is crucial that parents and caretakers are aware of the harmful effects of lead.

In 1978, lead was banned in the U.S. for use in children's products. However, older toys that were made in the U.S. before 1978 may contain lead paint. Lead is still commonly used in other countries. **Lead has been found in children's metallic jewelry and on imported toys.**



Lead is toxic to the central nervous system. Children under the age of six and fetuses are at the greatest risk of lead exposure. Exposure can damage the nervous system, leading to developmental delays, learning and behavior problems, or even death.

An advertisement for lead testing. It features a photograph of a smiling child with curly hair. Below the photo, the text reads "Test Me for Lead at Age 1 & 2". At the bottom, it says "TOMPKINS COUNTY HEALTH DEPARTMENT" with the tagline "Your Partner for a Healthy Community", the phone number "(607) 274-6604", and the website "www.tompkins-co.org/health".

Helpful Resources:

Check for toys and other children's products that have been recalled at these websites:
<www.recalls.gov> or <www.cpsc.gov>.

The New York State Department of Health maintains a website for lead hazard recalls at:
<www.health.state.ny.us/environmental/lead/recalls>.

For general information about toy safety, including the latest report from 2017, "Trouble in Toyland: The 32nd Annual Survey of Toy Safety", please visit
<<https://uspirgedfund.org/sites/pirg/files/cpn/USN-112117-A1-REPORT/toyland-report-32.html>>.

In Tompkins County, you can get information about Lead and Lead Poisoning by calling or emailing the Cornell Cooperative Extension Consumer HelpLine at (607) 272-2292/
cce.consumerhelp@cornell.edu or visit <http://ccetompkins.org/your-home/healthy-homes/lead>

You can also call the Tompkins County Health Department at (607) 274- 6604 or visit
<http://www.tompkinscountyny.gov/health/lead/index>